

The **Taranto** a Fox that's big on living

FREE METRO SITE VISIT

The Taranto is Fox Granny Flats' latest release for the Perth Metro market. It is a modern one bedroom design with all the comforts of home packaged into a spacious 67sqm unit. This 6-star energy rated granny flat with reverse-cycle air conditioning remains comfortable all year round and disability options with custom selections are also available.



### Features

- ✓ Energy Compliant
- ✓ Available in Multiple Sizes
- ✓ Built in Balcony
- ✓ 1 Bedroom Design
- ✓ Kitchenette, Bathroom, Laundry

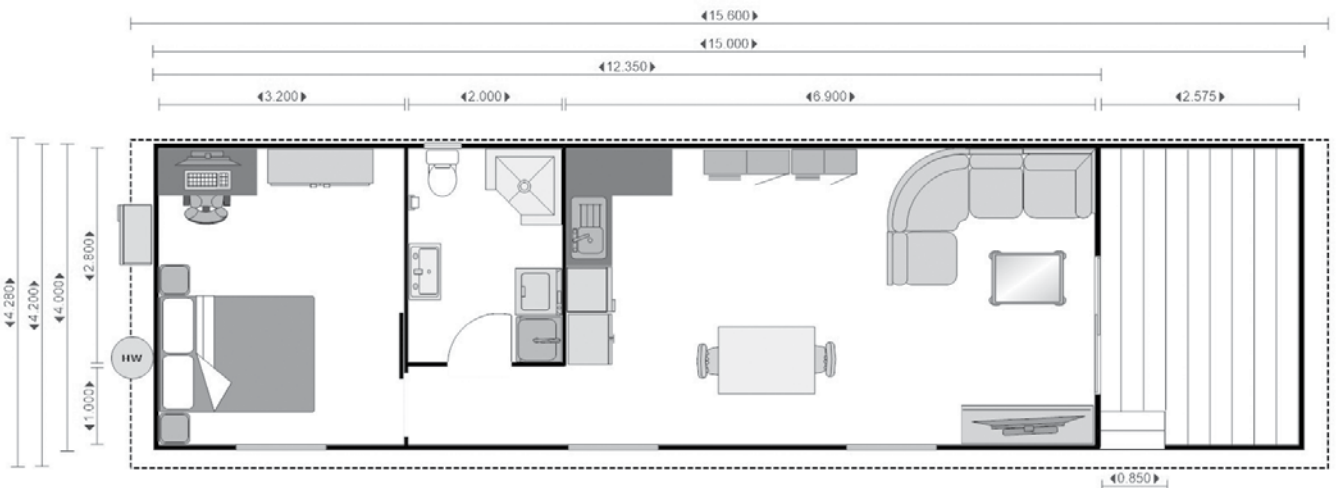


### Materials

- ✓ Australian Blue-Scope Colorbond® Steel – EPS-FR Panels
- ✓ CFC and Aquatite Particle Board Flooring – Termite Treated
- ✓ Cyclonic Steel Frame
- ✓ Aluminium Joinery and Extrusions
- ✓ Permifloor Underfloor Insulation
- ✓ Toughened Glass
- ✓ Plastic Composite Decking

### Upgrades

Please see over for our range of upgrades and additions you can choose from to further customise your building. Installation costs are subject to an individual site visit. These prices will generally vary from \$15,000 to \$25,000 +gst in the Perth Metro area depending on various property factors.



13.5m (58sqm)

14.7m (63sqm)

15.6m (67sqm)

4.3m

\$61,916

\$64,991

\$67,664

All prices are subject to GST.

## STANDARD INCLUSIONS FOR 13.5M MODEL

- ✓ 3.5kW Split System Reverse Cycle Air Conditioner
- ✓ 50L Storage Hot Water System
- ✓ Underfloor Insulation
- ✓ Colorbond® Sheeted Roof with Thermal Air Break
- ✓ Vinyl Floor Coverings - Timber Plank
- ✓ 1 x 1800mm Sliding Door
- ✓ 3 x 1200mm Sliding Windows
- ✓ 1 x 500mm Sliding Window
- ✓ 1 x Internal Sliding Door
- ✓ 1 x Internal Hinged Door
- ✓ Fly Screens Included
- ✓ 8 Double Power Points Throughout
- ✓ 1 x Coaxial Point
- ✓ 4 x Internal Dome Lights
- ✓ 1x External Bunker Light
- ✓ Smoke Alarm
- ✓ Plumbing and Electrical Fit-off

### Bathroom

- ✓ 1.0m Corner Shower with Rail
- ✓ Laundry Trough
- ✓ Toilet
- ✓ 750mm Vanity
- ✓ 750mm Mirror
- ✓ Extractor Fan
- ✓ Towel Rail

### Kitchen 'A' Included

- ✓ Beige Laminate Benchtops
- ✓ Gloss White Faces
- ✓ 900mm Cabinet
- ✓ 600mm Cabinet
- ✓ 450mm Drawers
- ✓ Sink & Tapware

**14.7m and 15.6m models house all the standard inclusions plus: 14.7m and 15.6m models house all the standard inclusions plus:**

- ✓ 1 x Double Power Point
- ✓ Upgrade to 5.0kW Split System Reverse Cycle Air Conditioner

## UPGRADES

### General upgrades

- Hinged Door \$110

### Hot Water System

- 80L Hot Water System \$315
- Gas Instant \$684

### Air Conditioning

- 5.0kW Reverse Cycle Split System \$440

### Exterior Cladding

- Price dependent on unit size

### Colour options

- ✓ Standard colour: **Satin Grey**
- + Black Trims/Flashings
- Change colour \$245
- Ash
- Light Maple
- Ivory
- Bone
- Mist Green

### Bathroom/Laundry

- 1.1m Shower \$185
- 1.2m Shower \$305
- Glass Shower Screens \$705
- 750mm Mirror Cabinet \$280
- 900mm Vanity \$160
- 900mm Mirror \$60
- 900mm Mirror Cabinet \$310
- Full Laundry Option \$780

## ADDITIONS

### Doors & Windows

#### Sliding Door

- 2145mm x 1800mm \$1,350

#### Glass Hinged Door

- 2145mm x 900mm \$1,350

#### Fixed Window

- 300mm x 1400mm \$585

#### Sliding Window

- 1200mm x 1200mm \$836
- 1000mm x 1000mm \$755
- 500mm x 500mm \$435

### General Additions

- Double Power Point (each) \$95
- Carpet with Underlay - Various Colours \$38/sqm
- Fan/Light Combo \$310
- 1200mm Sliding Mirrored Wardrobes \$825
- 1800mm Sliding Mirrored Wardrobes \$1109

### Kitchen

- Overhead Cupboards (600mm Corner Cabinet, 450mm, 600mm, 2 x 300mm) \$855

### Bathroom

- Laundry Tower Cabinet \$275

All prices are subject to GST.